

# How to Activate and Update the Foxwell NT530

The Foxwell NT530 is a powerful Bi-Directional Scan Tool that is highly recommended by car owners and automobile enthusiasts.

Part of ownership is access to Foxwell's Lifetime Software updates and improvements with your device. This includes the BMW-specific suite of software which allows enhanced interface with many more electronic modules contained in your BMW (and not JUST the engine specific data).

Because the software ownership requires licensing to you, the tool owner, BimmerWorld is not able to pre-load software to the tool. So **the FIRST thing we recommend** is to follow the directions below and get the latest, fully updated BMW-specific package onto your NT530 handheld unit.

Below is a walk-through of how to Register your product with Foxwell, the manufacturer, as well as how to add the BMW specific software pack, update the device software/firmware, or another Make to your NT530 tool.

## Part1: Foxwell NT530 Activate and Update Manual for New Users

1. Download and Prepare the Update Tool (Requires Windows PC).

Click to download the update tool for Foxwell NT530: [Update Tool for Foxwell NT530](#).

Follow the guide to install the NT530 software program step by step.

The screenshot shows the Foxwell website interface. At the top, there is a navigation bar with the Foxwell logo, a search bar, and links for 'Login / Signup My account' and 'Cart'. Below the navigation bar, there is a menu with links for 'Home', 'OBD2 Categories', 'Coverage Checker', 'Buyers Guide', 'Blog', 'Support', and 'About Us'. The main content area is titled 'Update Tools' and is divided into two sections: 'OBDII Code Reader' and 'Professional Scanner'. The 'OBDII Code Reader' section contains a table with 5 rows and 4 columns: Model, Application Platform, Size, and a Download button. The 'Professional Scanner' section contains a table with 7 rows and 4 columns: Model, Application Platform, Size, and a Download button. The 'NT530' row in the 'Professional Scanner' table is highlighted with a red border, and the entire 'Professional Scanner' table is highlighted with a red background. A 'Chat with us' button is visible in the bottom right corner.

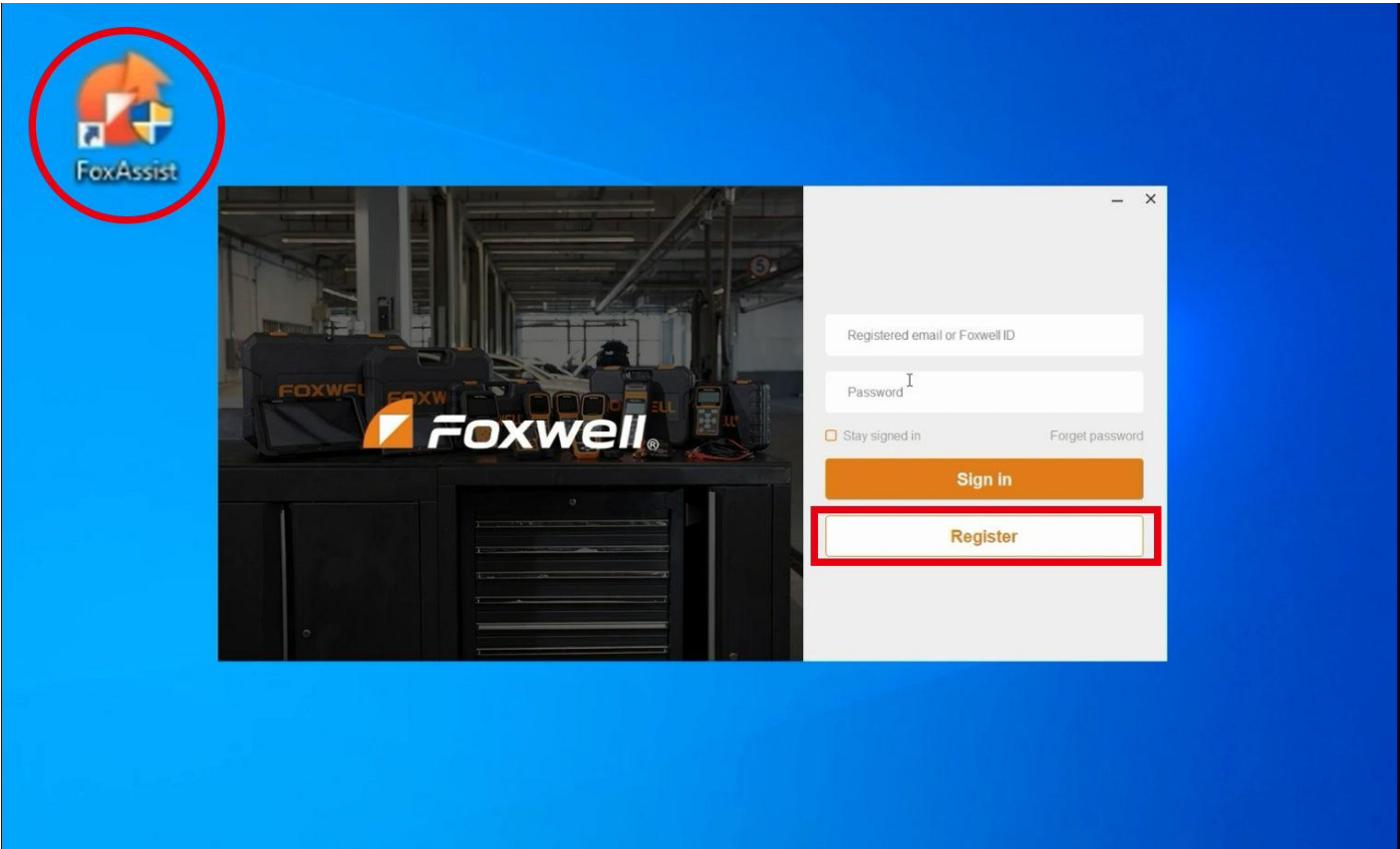
Model	Application Platform	Size	
NT301	XP, WIN7, WIN10	141.9M	<a href="#">Download</a>
NT201	XP, WIN7, WIN10	141.9M	<a href="#">Download</a>
NT204	XP, WIN7, WIN10	141.9M	<a href="#">Download</a>
NT200E	XP, WIN7, WIN10	7.6M	<a href="#">Download</a>
NT200C	XP, WIN7, WIN10	7.6M	<a href="#">Download</a>

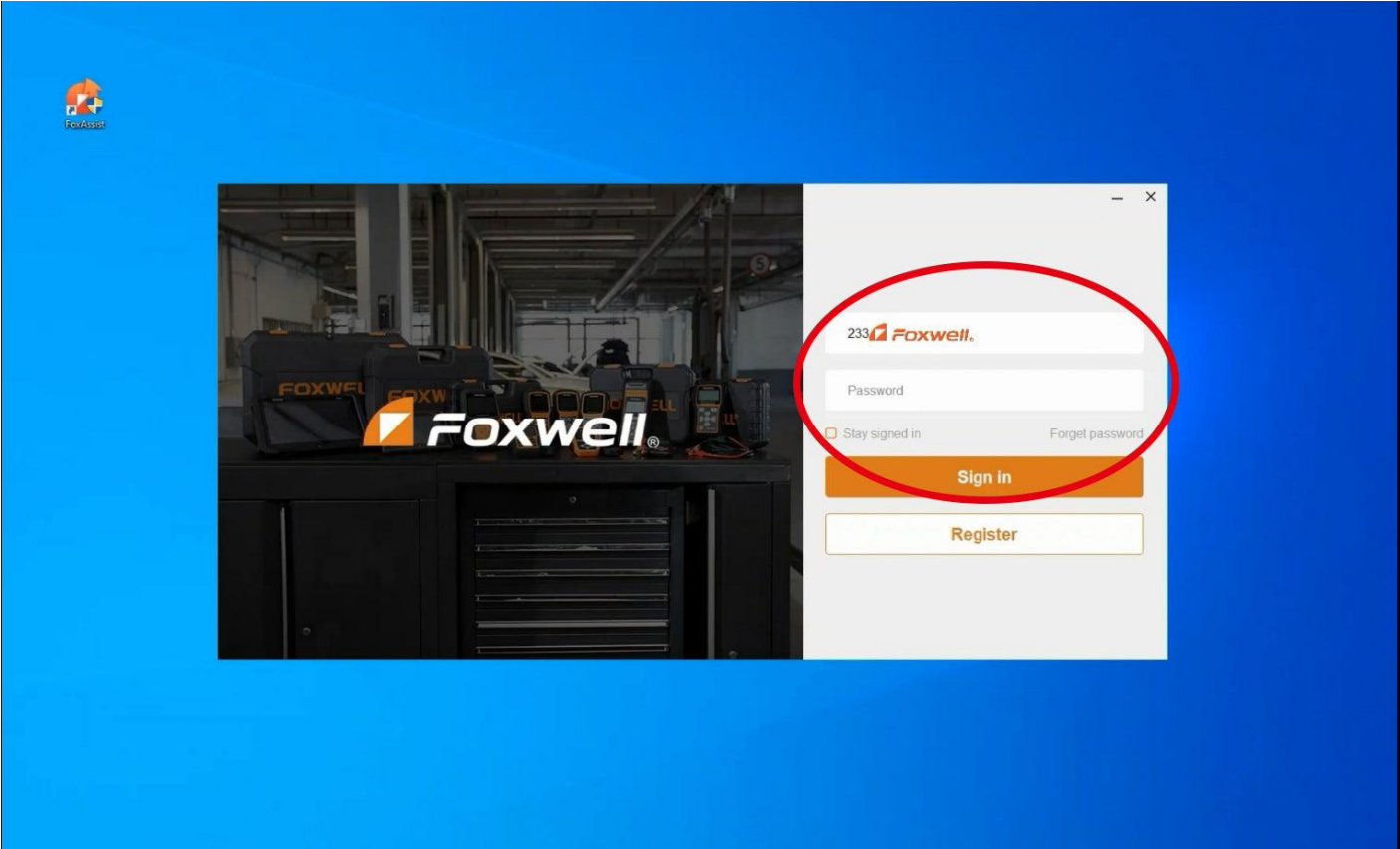
Model	Application Platform	Size	
NT530	WIN7, WIN8, WIN10	121M	<a href="#">Download</a>
NT650 Elite	WIN7, WIN8, WIN10	121M	<a href="#">Download</a>
NT680	WIN7, WIN8, WIN10	121M	<a href="#">Download</a>
NT680 Lite	WIN7, WIN8, WIN10	121M	<a href="#">Download</a>
NT680 Pro	WIN7, WIN8, WIN10	121M	<a href="#">Download</a>
NT510 Elite	WIN7, WIN8, WIN10	121M	<a href="#">Download</a>

**2. Register for Foxwell Account**

1) Click the Update tool named "FoxAssist" and click "Register".

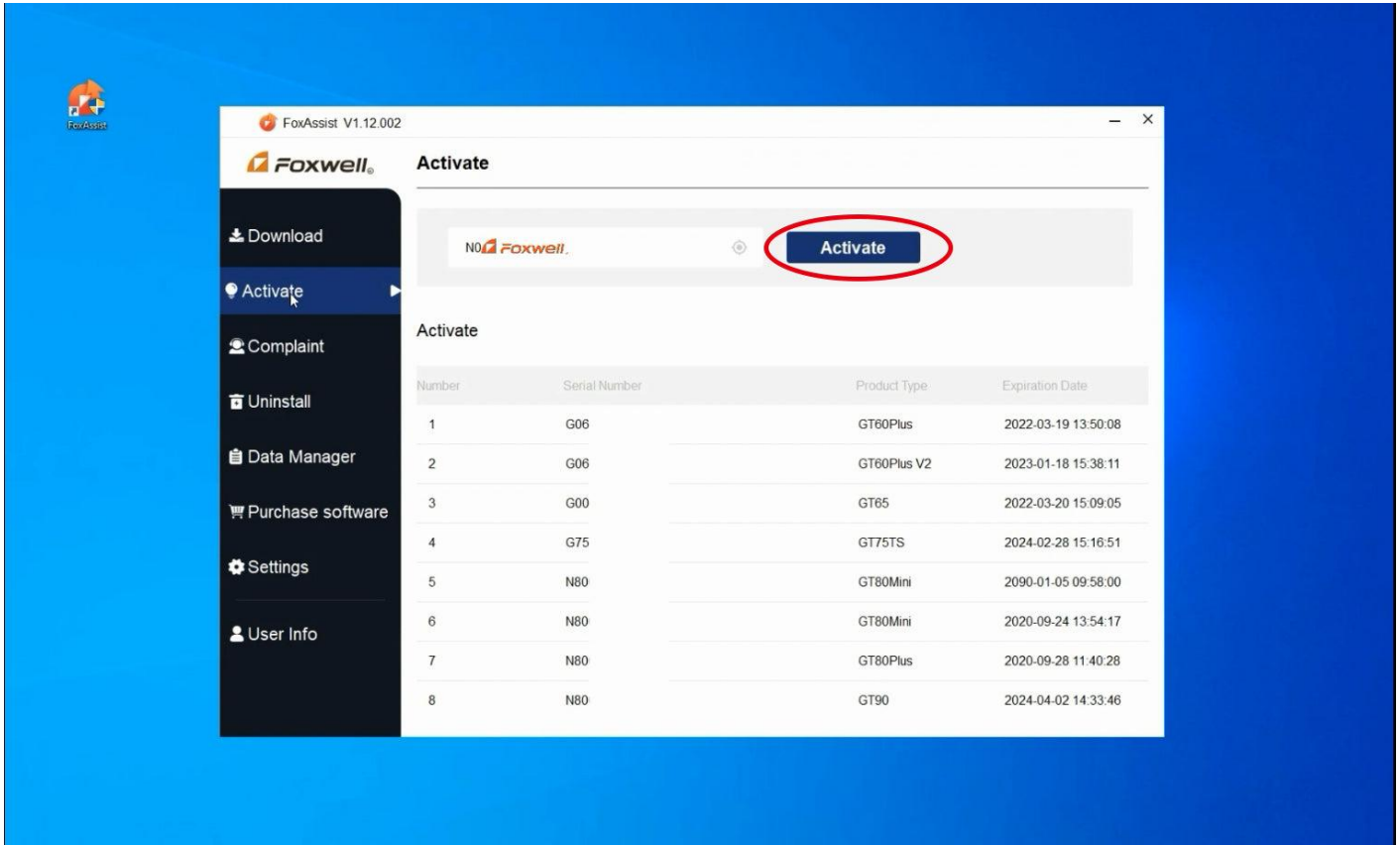


2) After registration, sign in with your account information.

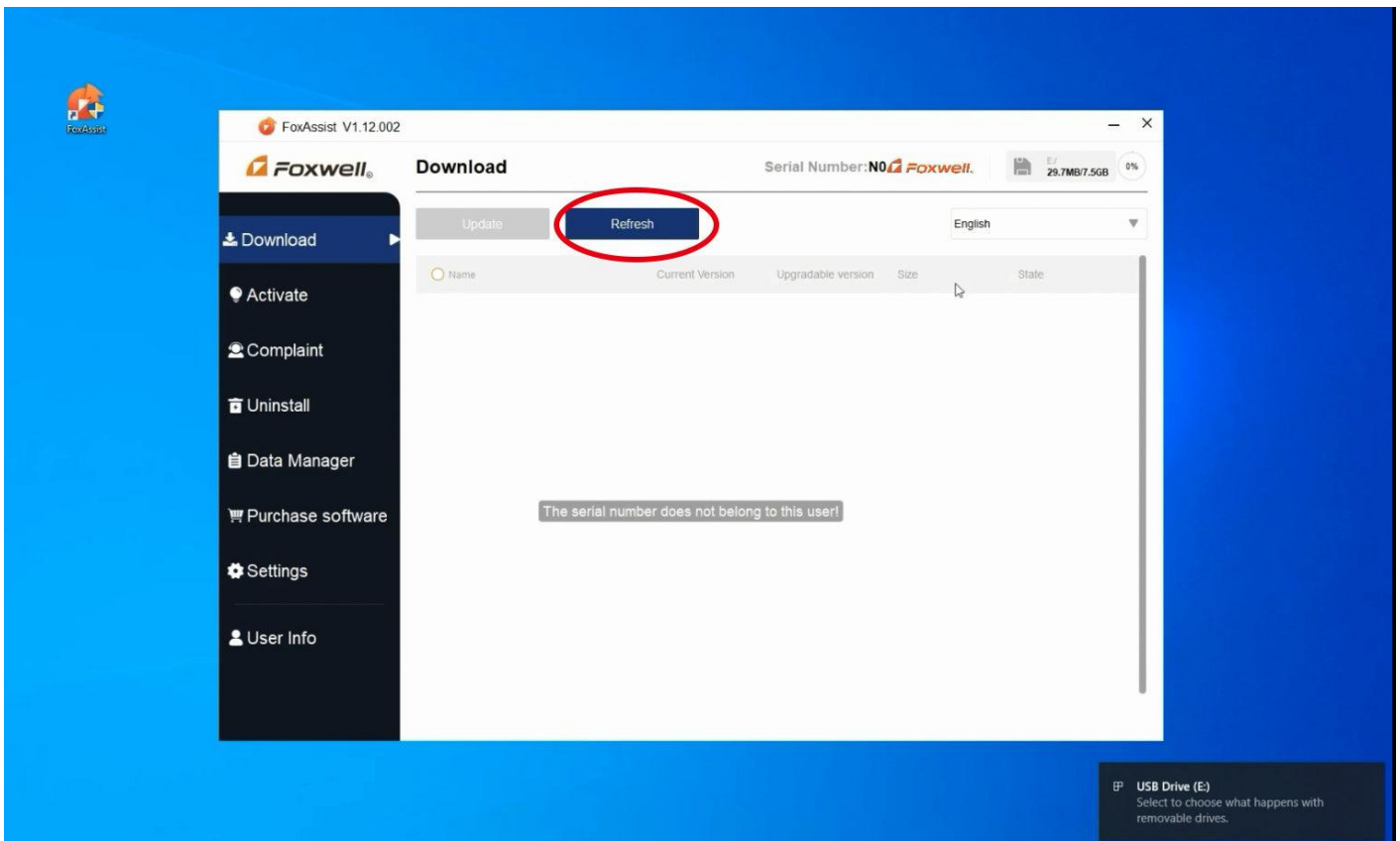


### 3. Activate the Foxwell NT530

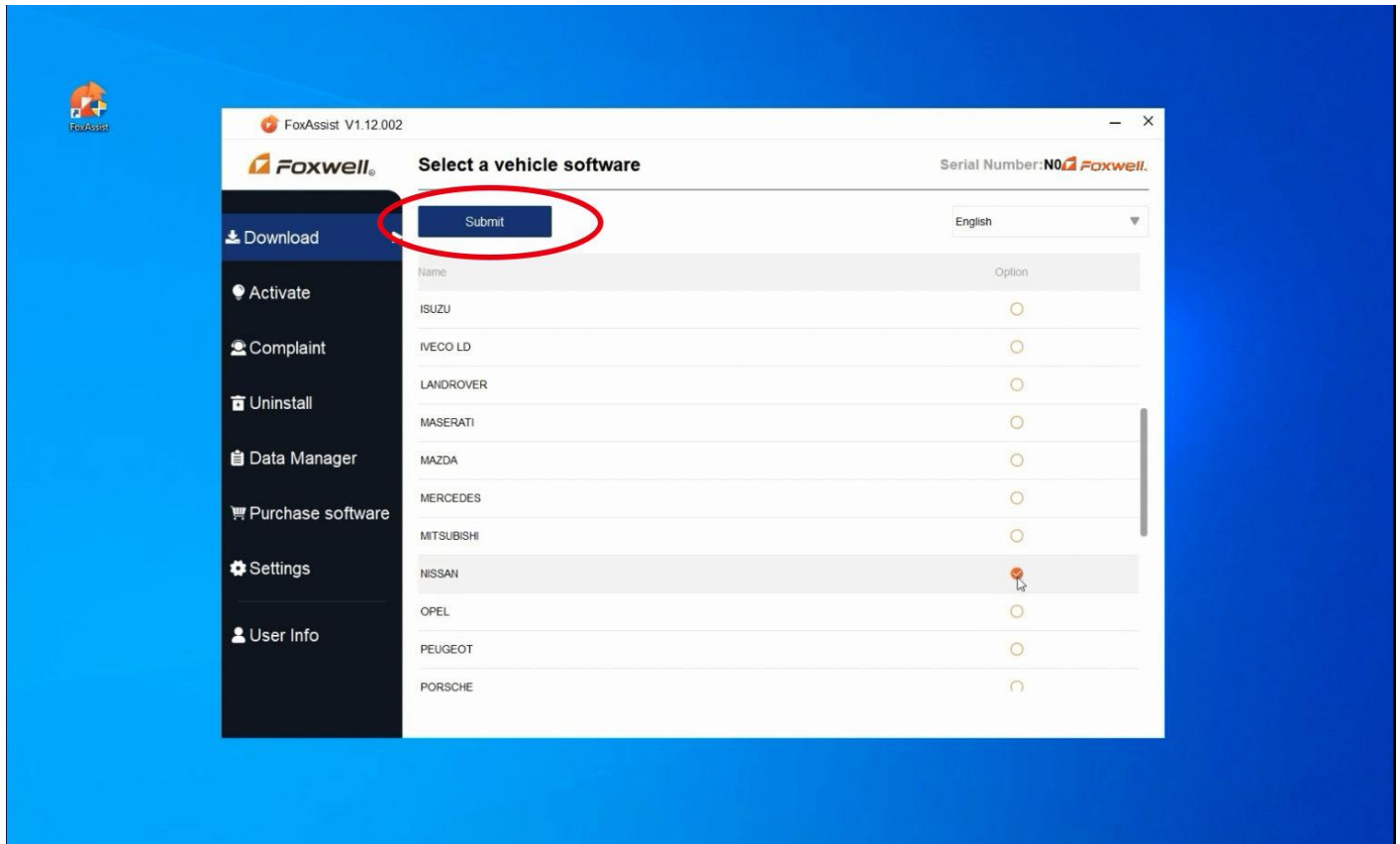
- 1) Put the scanner memory card into a card reader and connect to the Windows computer.
- 2) Click "Activate" on your computer.



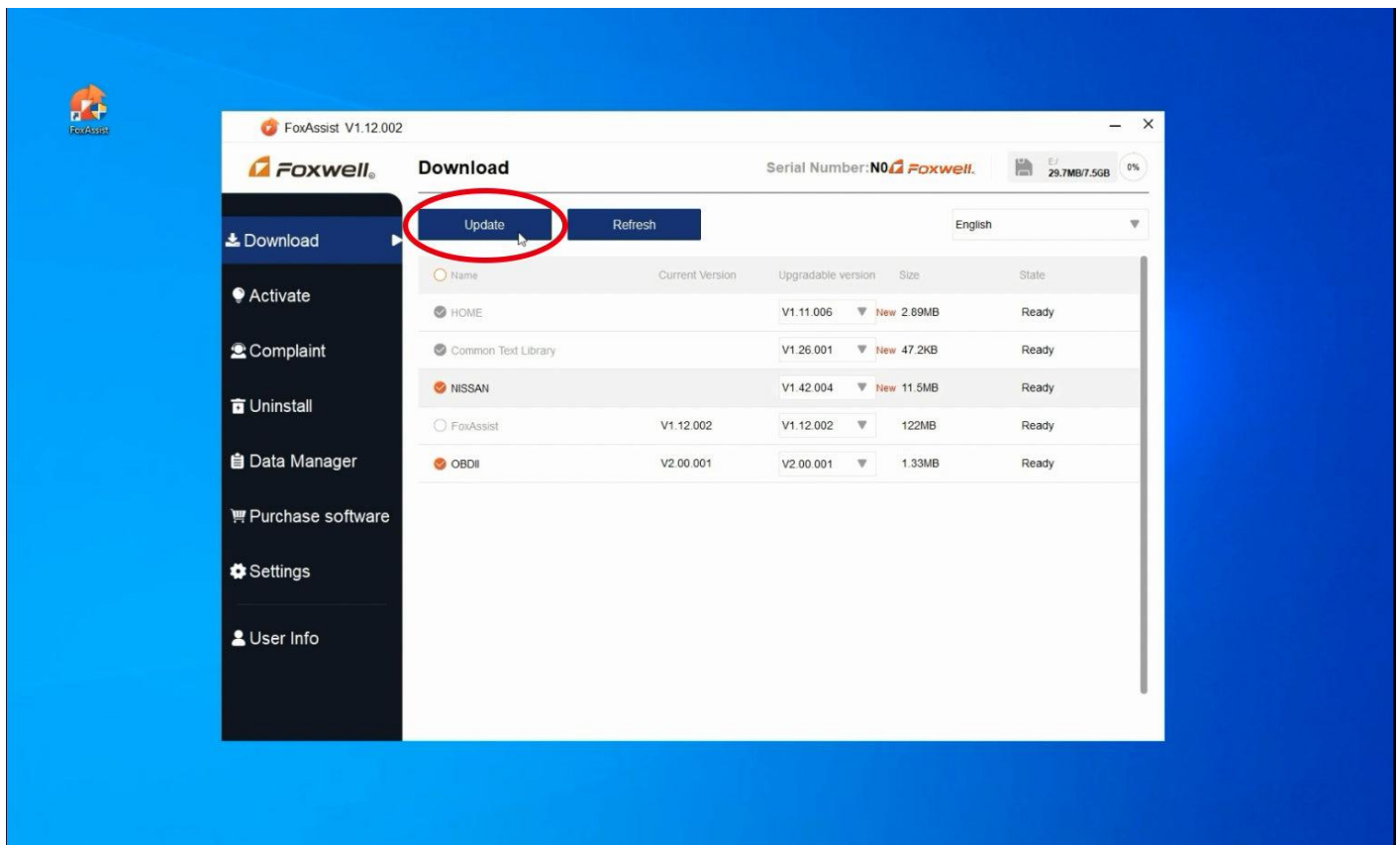
- 3) Click "Refresh". After the refresh is done, click "OK".



4) Select the vehicle software you need and click "Submit".



5) Select the available items (e.g.: OBDII), and click "Update".



6) The scanner will be activated and the software package successfully loaded when the download process is finished.

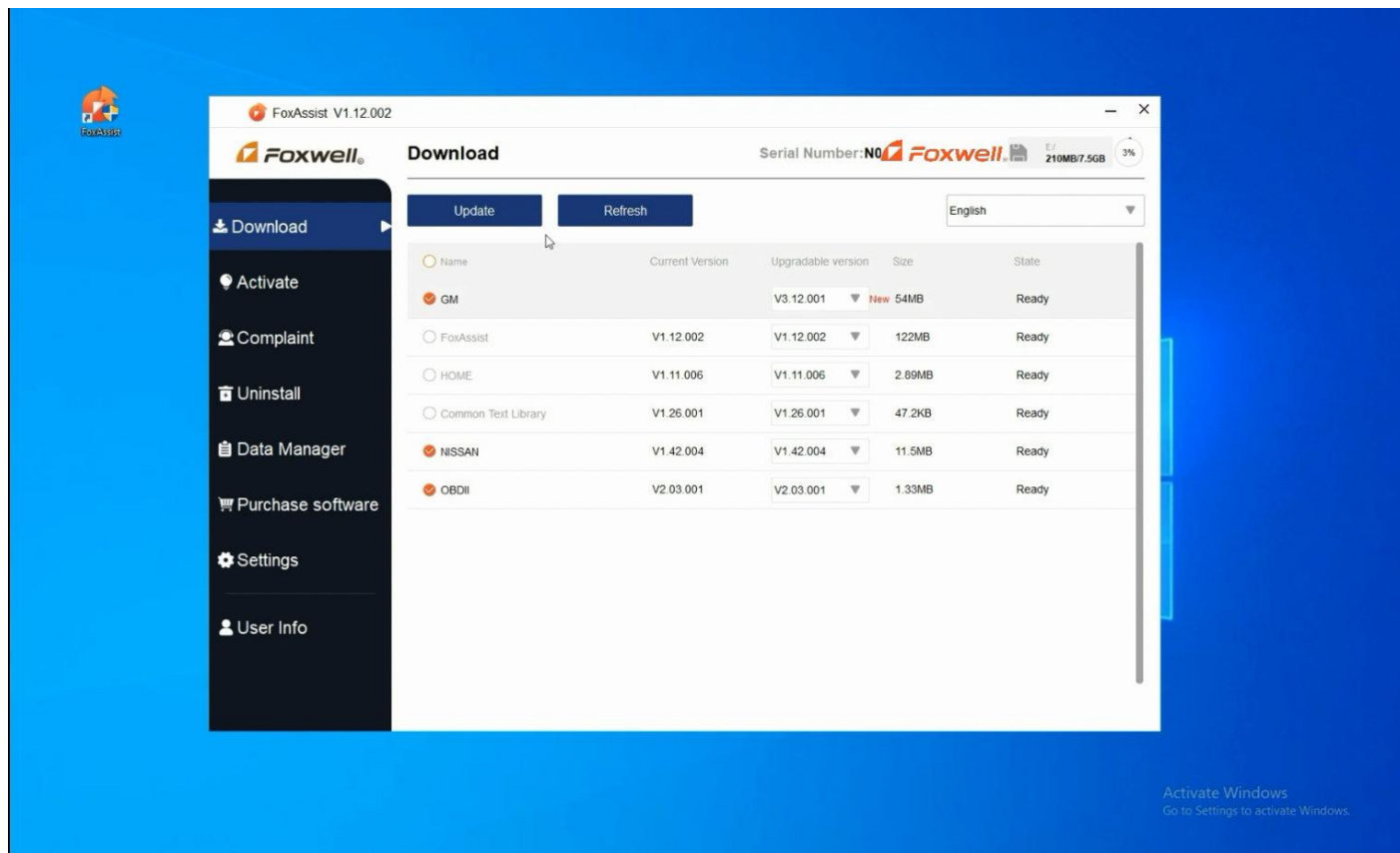
Please note: It takes longer for some of the larger files to download. The BMW software is quite large compared to some other makes (as it includes all BMW models, as well as MINI and Rolls Royce). Please be patient while it downloads. It's worth the wait! Typical internet connections just take several minutes or less.

## Part2: Foxwell NT530 Activation and Update for Extra Software

### 1. Preparation:

- Make sure your scanner is activated and the update tool "FoxAssist" is downloaded. If not, please refer to the steps above to prepare your device and the update tool.
- Connect the card reader with the memory card to the Windows computer.

### 2. Select all the available items, and then click "Update".



3. When the update process is finished, the added BMW software will be on the main menu of your scanner.

With the tool plugged in (either to USB power, or connect to your BMW's OBD port) you should be able to see the BMW item has been added to your home screen. This means your tool has been updated and the BMW software package is now registered and ready to use!



Other makes can be added as well with purchase from Foxwell. (optional)



## Questions?

**How do I know if I have the BMW software loaded?** The easiest way to tell is if your NT530's home screen has a "BMW" icon option, which is not present if the BMW software is not loaded and updated.

**What if I don't have a Windows PC?** We suggest finding a friend with a windows laptop or using a work / office PC. The process is quite straightforward and the tool is much more capable and valuable with the latest BMW software registered and installed.

**How can I add other Makes (other than BMW) to my tool?** Foxwell allows you to add more makes to the tool by using the "Purchase Software" option in the update tool – the same used in the steps above. BimmerWorld is not part of that transaction, but the tool you have is capable of supporting diagnostic info for nearly all makes and models. The fees from Foxwell are quite nominal and also include Lifetime Updates which allow newer models / years to be supported in the future, as well as improvements and additional functionality down the road.